

# DC Light-Line

Heights: 40 - 60 - 80 - 100 mm

The DC Light-Line is an aluminum recessed cover with the cover placed freely in the outer frame.

The recessed covers are expertly provided with two seals: one seal at the base and a T rubber seal incorporated into the outer frame.

The T rubber seal has three functions.

- It prevents dirt between the cover and the frame.
- The rubber's elastic effect avoids tension between the cover and the frame.
- It offers an additional smell barrier.



## Information and properties

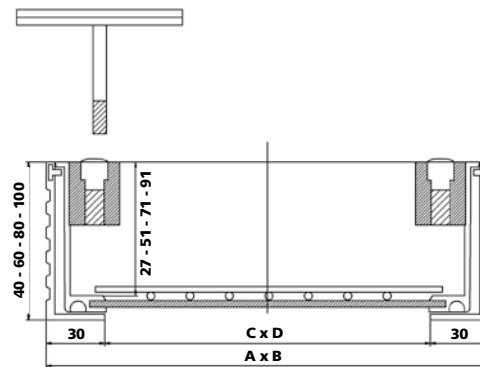
- Frame and cover are made of extruded aluminum profile and are easy to open with the lifting keys.
- Application: outdoor use for balconies, garage doors, patios, etc.
- The cover is not screw tight.
- The recessed cover is standard equipped with a reinforcement mesh.
- The bottom plate is made of a 3mm galvanized steel plate (on request: bottom plate in 3mm aluminum).



Smell proof



Waterproof



DC Light-Line		DC-40 L	DC-60 L	DC-80 L	DC-100 L
Frame size A x B (mm)	Clear opening C x D (mm)	Weight (kg)	Weight (kg)	Weight (kg)	Weight (kg)
300 x 300	240 x 240	3.56	3.86	4.49	4.94
400 x 400	340 x 340	5.73	6.08	6.80	7.43
500 x 500	440 x 440	8.56	8.94	10.09	10.83
600 x 600	540 x 540	11.96	12.25	13.52	14.41
700 x 700	640 x 640	15.61	15.96	17.36	18.39
800 x 800	740 x 740	19.93	20.33	21.86	23.04
900 x 900	840 x 840	24.73	25.11	26.76	28.09
1000 x 1000	940 x 940	30.38	30.73	32.52	33.99
Suitable for tiles		✓	✓		
Suitable for tiles and pavers				✓	✓

Custom made: within 14 days of ordering

\* Concrete load min. 4 cm

