

DC Multi-Line

Heights: 60 - 80 - 100 mm

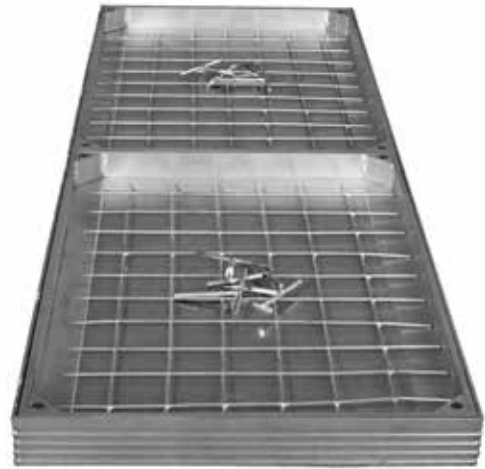
We want to provide a solution for the problem when a utility duct with electricity, water, compressed air, etc. is present.

The combination is solely possible with the Pro-Line series and the DC-Euromaster. Both types are not only odour, gas and waterproof, but at the same time the filling cover is screwed to the outer frame.

The recessed covers are equipped with three seals according to the latest engineering standards: Two seals at the base and a T rubber incorporated in the side of the frame.

The T rubber has three functions.

- Prevents dirt residue between the filling cover and the frame.
- Due to the rubber's elasticity, tension is avoided between the filling cover and the frame.
- It provides an additional odour barrier.



Gas proof



Smell proof



Waterproof

Information and properties

- Frame and cover are made of extruded aluminum profile and are easy to open with the lifting keys. At the bottom of the frame, a pre-mounted adapter can be connected to a PVC outlet pipe.
- Application: indoor and outdoor use.
- The cover is screw tight.
- The inspection cover is standard equipped with a reinforcement mesh.
- The bottom is made of a 3mm galvanized steel plate (on request: bottom plate in 3mm aluminum).



Multi-Line Pro - Standard height			
Type	Frame dimensions height	Tiles	Tiles & pavers
MLP 60	60mm	✓	
MLP 80	80mm		✓
MLP 100	100mm		✓

Custom made: within 14 days of ordering