

# STARDRAIN

Length: 1000mm

The Stardrain is a drainage channel that consists of a plastic (PVC) channel element with an aluminum design grate. This drainage channel is used around the home, in areas with no traffic.

For example, you can drain the water from the Star Drain drainage channel to the sewer or infiltration system.

This can be done via a side or bottom spout.

Furthermore, by draining the water into an infiltration system, you work sustainably and improve the water balance of the soil.

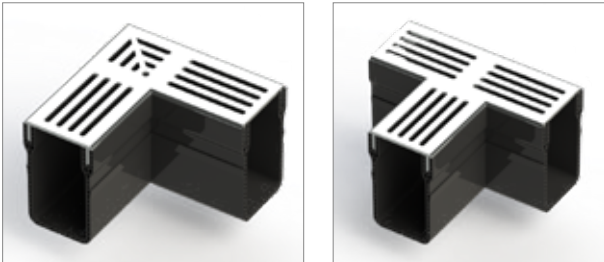
## Characteristics

- The drains are made of high-class material
- Aluminium grating grey, black or cortensteel
- Small weight makes transport and assembly of the drains easy
- Smooth surface provides high hydraulic properties
- High chemical resistance
- Drains connected with connection parts.
- Grating lies in the PVC element
- Aesthetic finishing
- Load class: A15



Length (mm)	Weight (kg)	Height (mm)	Width (mm)	Grey grating	Black grating	Cortensteel grating
				Item no.	Item no.	Item no.
1000	1.705	100	65	27969	27970	33028

## CORNERS



### Characteristics

- Corner with grey, black or cortensteel grating
- T-section with grey, black or cortensteel grating
- Both these corners can be attached to the Stardrain by connection parts

	Grey T-section	Black T-section	Cortensteel T-section	Grey Corner	Black Corner	Cortensteel Corner
Height (mm)	Item no.	Item no.	Item no.	Item no.	Item no.	Item no.
100	27974	27973	33030	27971	27972	33029

## END PIECES



### Characteristics

- Closed end pieces
- Open end pieces with horizontal outlet Ø 50 mm
- Application: easy to fix on the Stardrain by specific click-system

	Closed end pieces	Open end pieces Ø 50 mm
Height (mm)	Item no.	Item no.
100	27978	27979

## CONNECTORS



### Characteristics

- Closed connectors
- Connectors with vertical outlet of Ø 80 mm
- Application: easy to fix on the Stardrain by specific click-system

	Closed connectors	Connectors with outlet of Ø 80 mm
Height (mm)	Item no.	Item no.
100	27976	27977